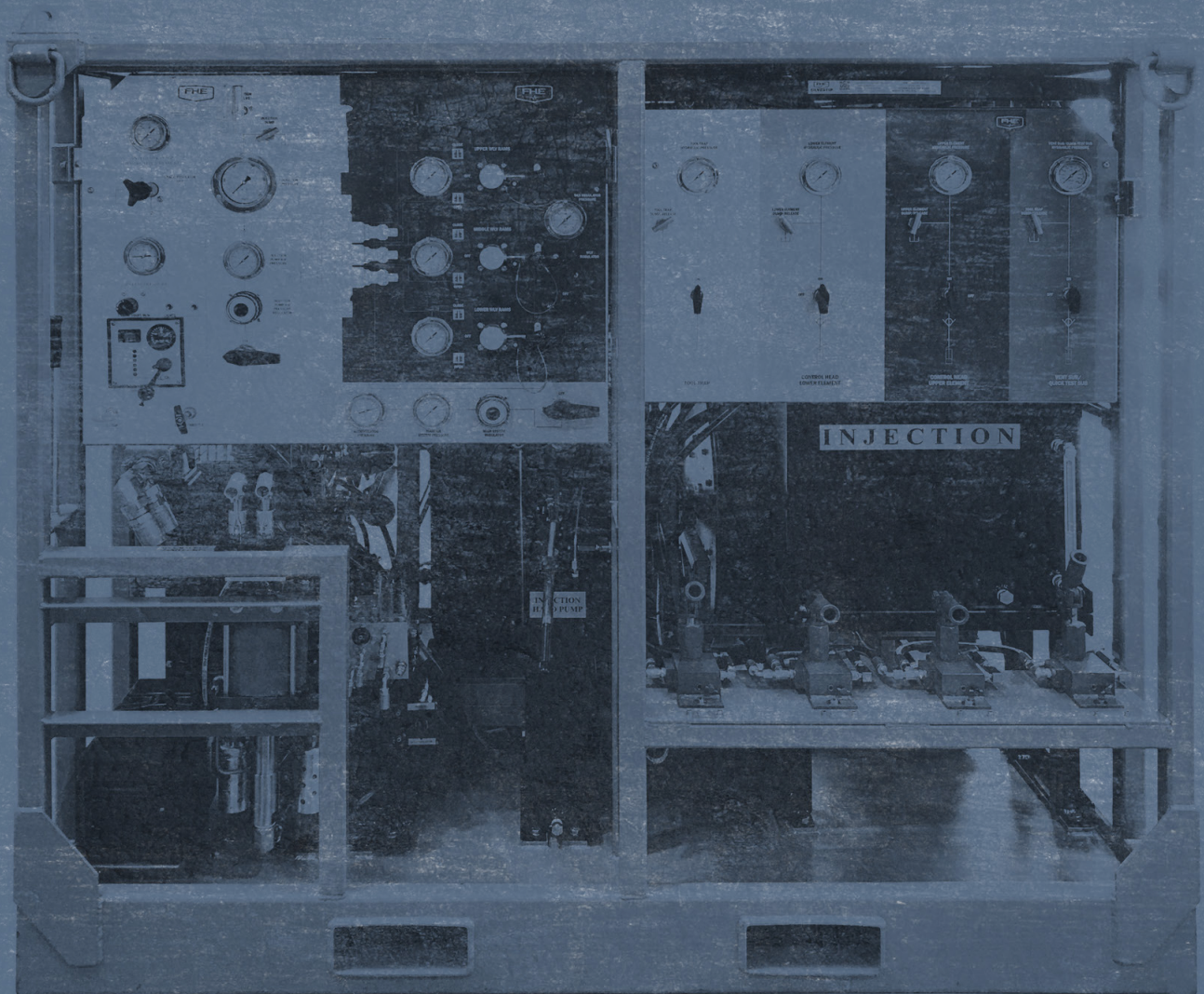


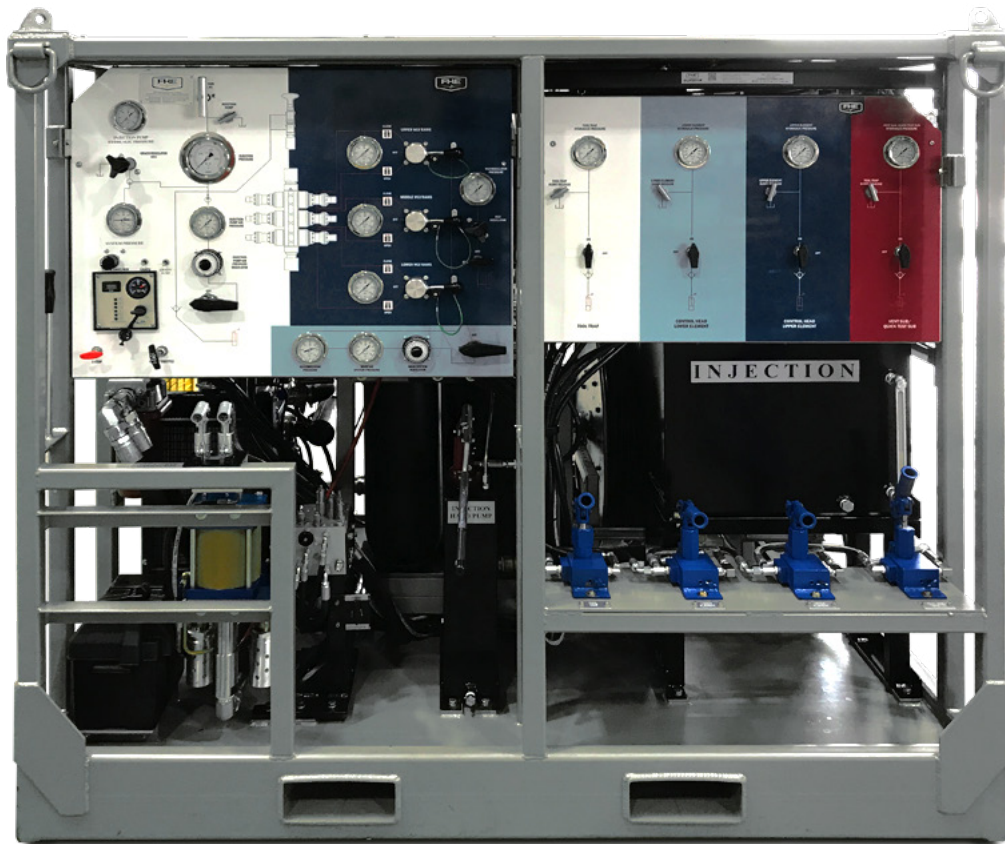


GREASELESS CONTROL UNIT & POLY-COATED TOOL TRAP FLAPPERS



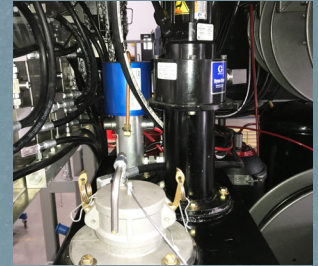


SAFE AND EFFICIENT WIRELINE OPERATIONS WITHOUT THE MESS



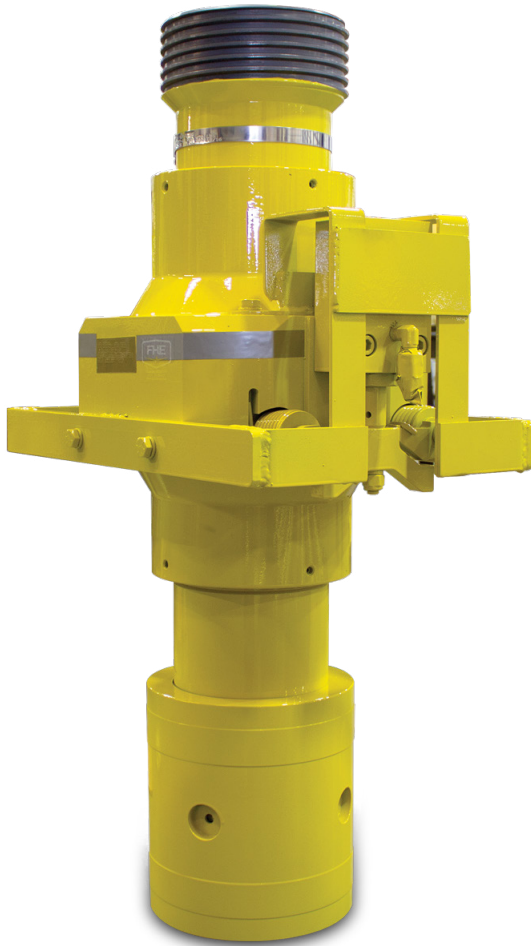
FHE's Greaseless Control Unit allows you to operate wireline valves, tool traps, and other equipment needed for greaseless wireline operations. The graphic control panel makes operations simple and efficient. The compact and lightweight greaseless control units are easy to maneuver around the wellsite.

**Greaseless Operations
Eliminate High Grease
and Maintenance Costs**



GREASELESS CONTROL UNIT SPECIFICATIONS

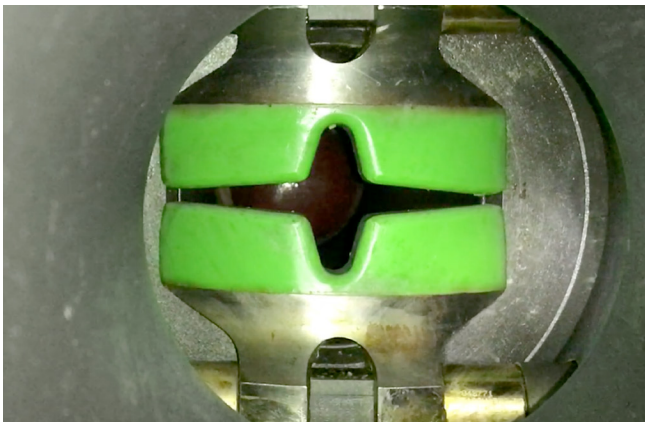
25 HP Cat Engine Tier 4 Final
6" Air Backup Accumulator Pump
2- 5 Gal. Acc. Bottles
Manual Hand Pump Backups for WLW, Tool Trap, Greaseless Control Head
10,000 PSI Hydraulic Intensifier (Injection)
12,000 PSI Pneumatic Injection Pump
12,000 PSI Manual Hand Pump (Injection)
20 Gal. Air Tank
Controls for Triple Wireline Valve with Safety Lockouts
100 CFM Air Dryer
Stainless Steel Control Panels
Powder Coated Frame

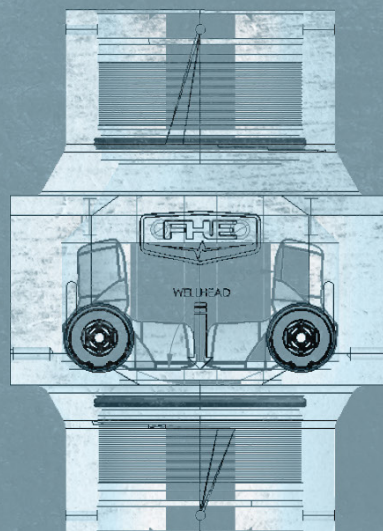
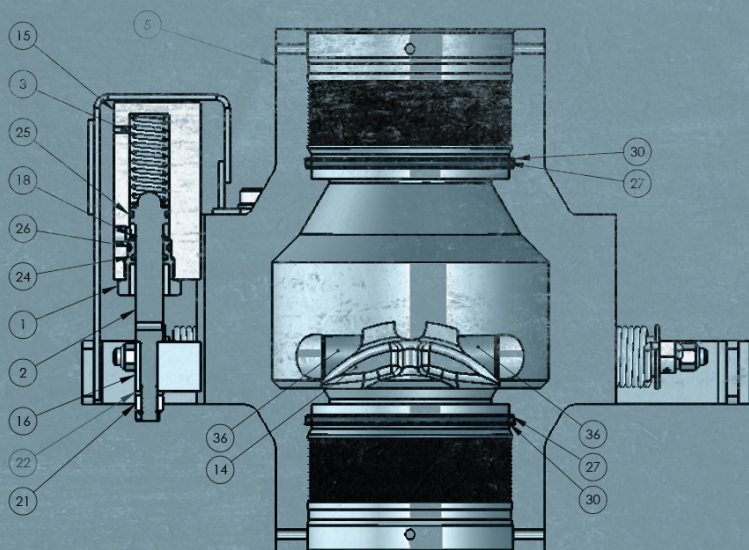
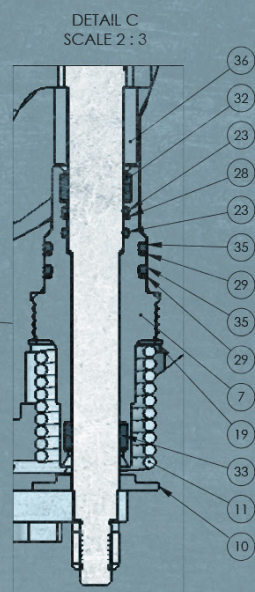
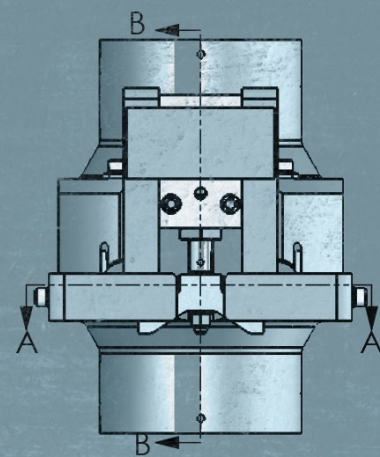
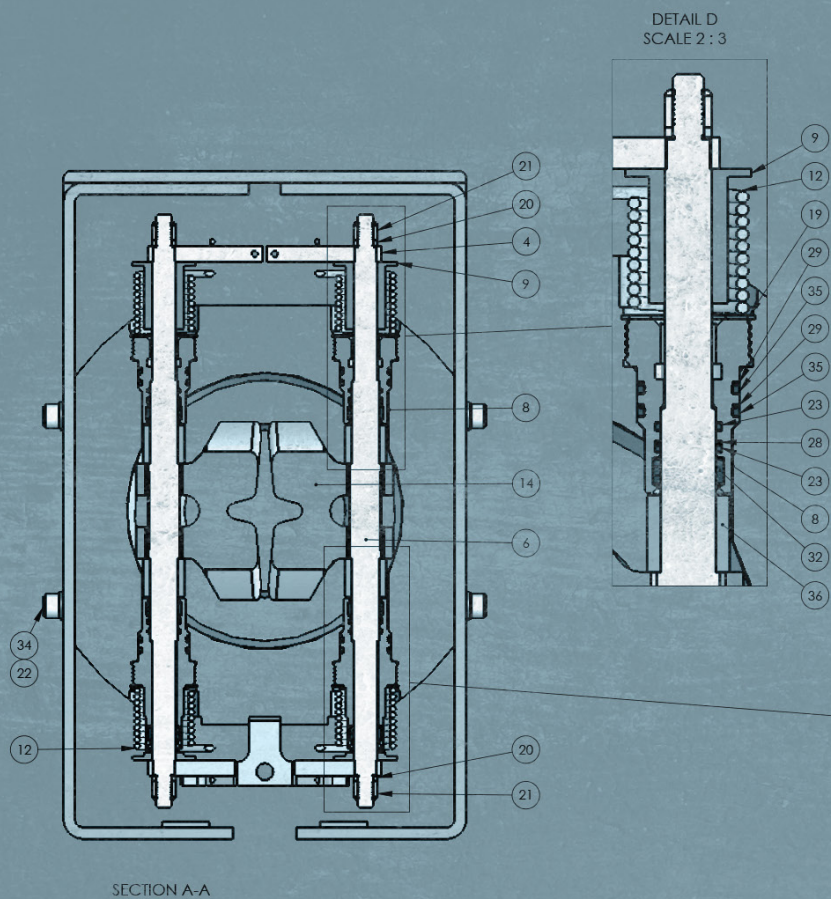


HIGH STRENGTH POLY-COATED FLAPPERS TO PROTECT WIRELINE CABLE

Poly-Coated Tool Trap Flappers increase the life of you greaseless cable. The proprietary coating protects wireline cables to reduces wear and extends its life as it runs in and out of the well.

Unique design allows space for wireline cable to move freely and prevent catching.





**Colorado**

1597 Cipolla Road
Fruita, CO 81521
970-243-0727

Texas

124 Industrial Drive
Cibolo, TX 78108
210-236-5427

Eastern United States

1500 Greene Street #4
Marietta, OH 45750

MENA

Building LT01 B25-32,
Al-Dhafra Plot P3
Al Markaz Abu Dhabi, UAE
+971-52-374-4445