



ESTO



2007

RIGLOCK

AUTOMATED
INTELLIGENCE

2.0

FEARLESS
INNOVATION



Automated Intelligence for Superior Safety and Performance.

RigLock 2.0 uses automated intelligence to transform wellhead operations, enhancing both safety and efficiency. Critical tasks are automated, ensuring precise and consistent execution, eliminating the possibility of human error. Real-time data analysis provides valuable insights for optimizing well performance. RigLock 2.0's intuitive interface simplifies training, making it proficient for personnel regardless of experience, minimizing downtime and maximizing productivity.



Automated safety protocols reduce human error

Pre-programmed workflows can automate critical tasks that might otherwise be prone to human error. By removing human involvement in potentially risky procedures, the chance of accidents and injuries is significantly reduced.



Reduces downtime and boosts productivity

The system's intuitive interface facilitates operators' ability to quickly make well-informed decisions, enhancing overall operational efficiency. This combination of automation and user-friendly design fosters smoother operations and heightened productivity.



Valuable data optimizes well performance

RigLock 2.0 provides valuable insights in both real-time and over extended periods. This wealth of information empowers operators to make informed decisions and fine-tune the performance of wellhead operations, ensuring efficiency and success in the long run.

SAFETY BENEFITS

Automated Safety Protocols:

- Reduces human error by automating critical wellhead operations.
- Ensures consistent execution of safety procedures with minimal human intervention.

Remote Operation:

- Allows operators to control and monitor wellhead functions from a safe distance.
- Reduces physical exposure to hazardous environments, enhancing personnel safety.

Real-Time Status Monitoring:

- Provides high-visibility status indicators for immediate awareness of wellhead condition.
- Enables proactive identification and mitigation of potential safety hazards.

Intelligent Hazard Detection:

- Utilizes real-time data analysis to identify and address potential safety risks before they escalate.
- Enhances overall safety by continuously monitoring and analyzing operational parameters.

OPERATIONAL BENEFITS

Automated Task Execution:

- Streamlines repetitive and time-consuming tasks, significantly reducing operational downtime.
- Increases overall efficiency by automating workflows and procedures.

Real-Time Data Collection and Analysis:

- Provides operators with up-to-the-minute information on wellhead conditions.
- Facilitates decision-making to optimize performance and efficiency.

Intuitive Interface:

- Simplifies training and reduces onboarding time with a user-friendly interface.
- Ensures that personnel can quickly and effectively operate the system.

Simple Operations:

- Minimizes complexity and operational errors with straightforward, single-button initiation of operations.
- Enhances ease of use, allowing for quicker and more efficient operations.

COMMERCIAL BENEFITS

Flexible Rental Options:

- Eliminates the need for significant upfront capital investment with various rental plans.
- Provides financial flexibility and allows for easy budget planning with predictable costs.

Comprehensive Maintenance and Certification:

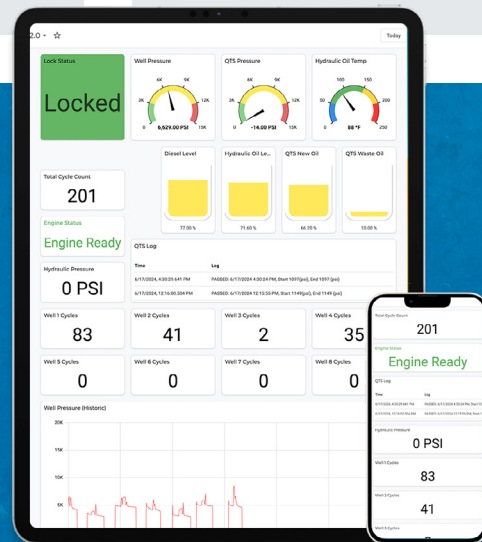
- Ensures hassle-free operation with FHE handling all maintenance and re-certification requirements.
- Reduces operational overhead by alleviating the burden of maintenance from the customer.

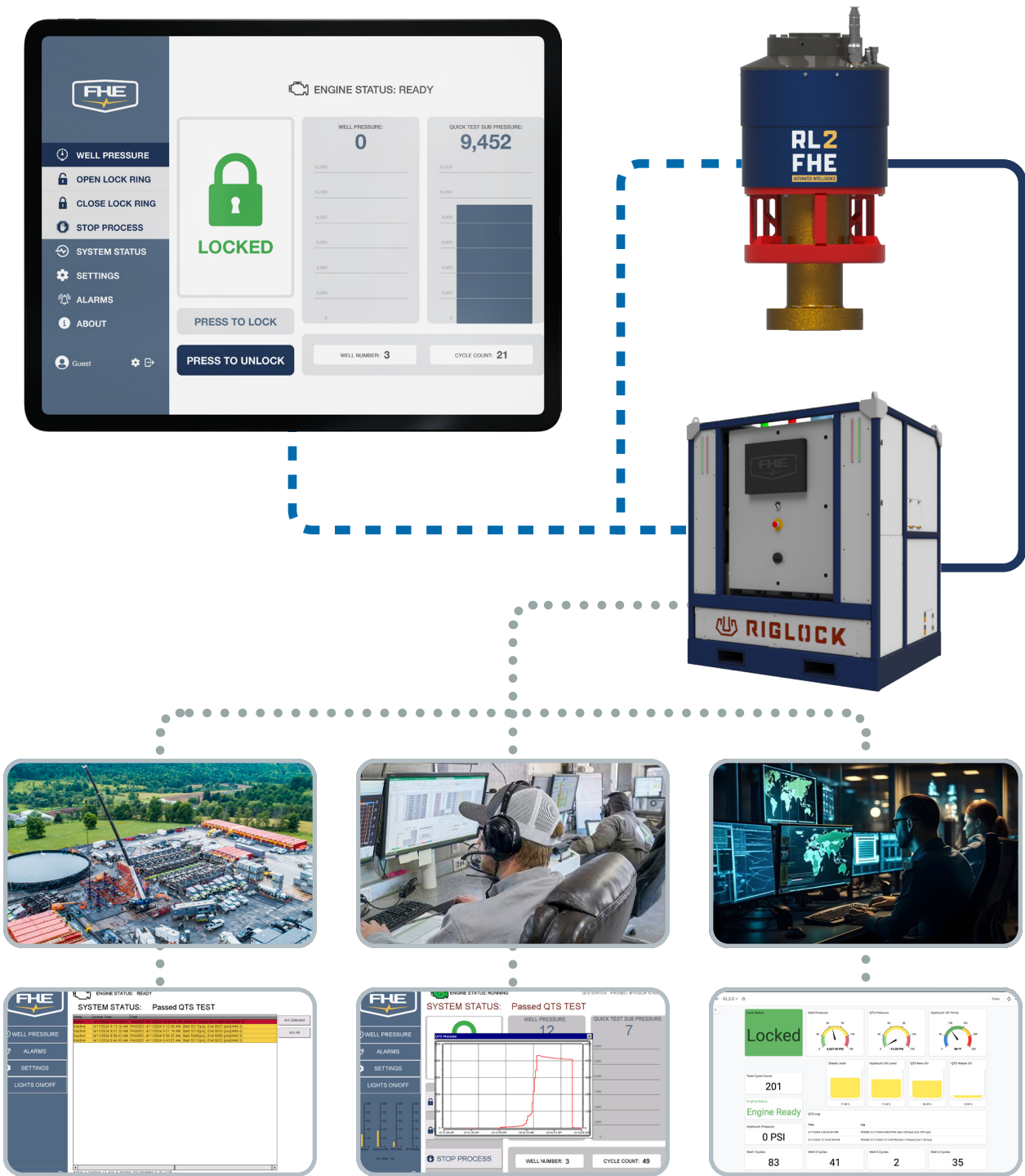
Cost-Effective Performance:

- Enhances operational efficiency, leading to reduced downtime and increased productivity.
- Provides a strong return on investment by minimizing operational risks and maximizing well performance.

Remote Monitoring From Your Digital Device

By accessing the RigLock 2.0 interface on your digital device, you can view critical data points, receive instant alerts, and make informed decisions on the go. Whether you're in the field, at the office, or on the move, having access to real-time information empowers you to stay in control of your operations and respond promptly to changing conditions.





Physical Connection

Wireless Operations

Remote Monitoring

RL2 FHE

AUTOMATED INTELLIGENCE

Colorado

1597 Cipolla Road
Fruita, CO 81521
970-243-0727

Texas

124 Industrial Drive
Cibolo, TX 78108
210-790-2955

Ohio

1500 Greene Street #4
Marietta, OH 45750
970-270-6651

MENA

Building LT01 B25-32,
Al-Dhafra Plot P3
Al Markaz Abu Dhabi, UAE
+971 2-585-2800

www.builtbyfhe.com